

Citrix Client Response Probe

The Citrix client response probe performs a real-world performance test of your Citrix Metaframe terminal server client connection, by performing an actual logon/logoff and application launch. Consequently, the availability- and QoS-data generated reflects the actual end user experience of the terminal server park. The Citrix probe supports terminal server parks, profiles, and can be configured to trigger a NimBUS alarm if the server park becomes unavailable.

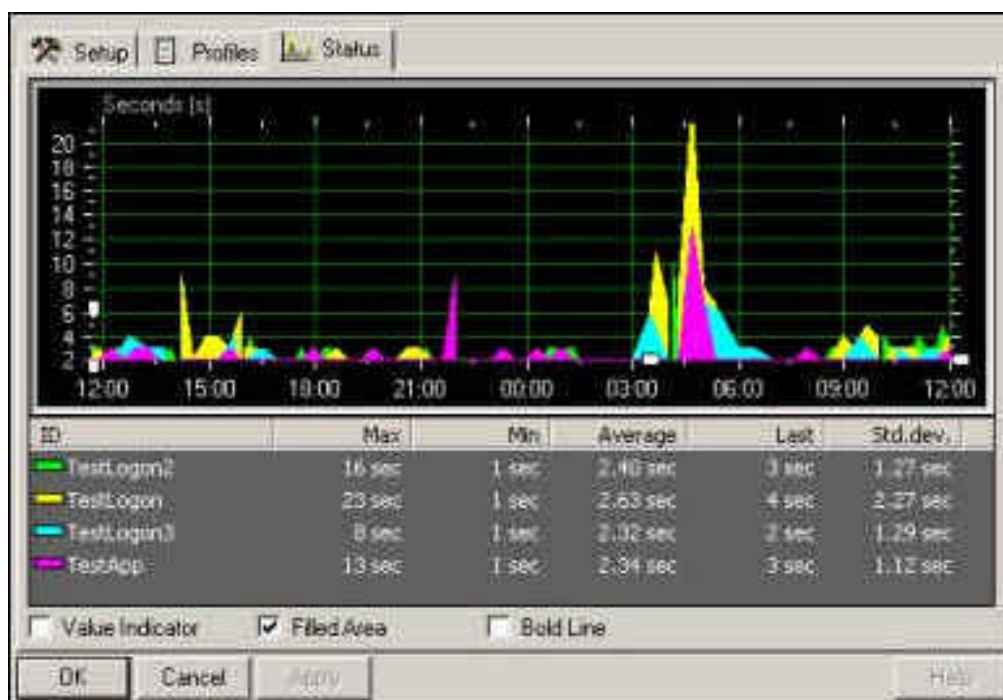


Fig. 1 The Citrix Client Probe collects performance data of your pre-defined Citrix terminal server client test sessions, and allows you to view the QoS data in a concise way

Features:

- Measures response-time for logon and logoff on Citrix terminal servers, and generates QoS data that can be used by the NimBUS Service Level Manager.
- Triggers a NimBUS alarm if the response time from a server exceeds the specified threshold.
- Profiles can be created for each terminal server (park) to be tested, where all necessary data for the connections can be specified.
- Generated QoS data can be displayed in the probe user interface, or in the web interface.
- QoS/SLA Enabled.

Supported Platforms:

- Windows 9x, NT and Windows 2000

Prerequisite:

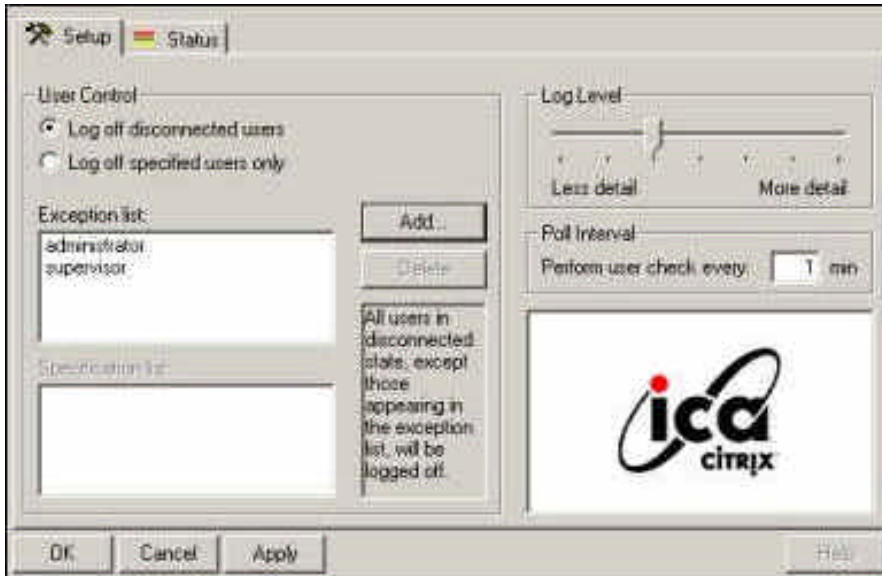
- NimBUS Manager rel. 2.0
- Citrix ICA Client v.6.0 or newer



All trademarks and registered trademarks used herein are property of their respective owners.

Terminal Server Probe

The Terminal Server Probe gives full control over the login state of the users on a Windows or Citrix terminal server, by automatically logging off users and closing all associated processes and file handles based on your parameters. This solves the problem with terminal servers not always doing this in a satisfactory way, thereby increasing stability and reducing the need for reboots. The Terminal Server Probe allows you to create an exception-list with users that you do not wish to be logged off, or alternatively a list of users to be logged off.



Features:

- Allows you to properly log off disconnected users after a state of inactivity.
- Closes all processes and file handles of a user session when logging it off.
- Exception lists exclude users from automatic logoff, or a list of users to be logged off

Supported Platforms:

- Windows NT 4.0 Terminal Server Edition / Windows 2000 Server/Advanced Server

Prerequisite:

- NimBUS Manager rel. 2.0
- Windows NT TS/2000 Server with Terminal Services enabled

